

# PC PENDANT

DESIGN BY PIERRE CHARPIN



Pierre Charpin's PC Pendants is a collection of refined suspension lighting that can be used independently or clustered together. The pendants are constructed in anodised aluminium, which makes the surface more resistant to corrosion. The light source in each pendant lamp is hidden by a removable polycarbonate moulded diffuser, creating both a soft directional output of light and determining the form of the lamp itself. The PC Pendants are available in a variety of sizes and colours, and are suitable for both contract and domestic markets.

## PRODUCT DETAILS

- / Part of a progressive and technologically advanced lighting collection.
- / A family of refined pendants, task lights, table and portable lamps.
- / CE approved.
- / Designed for use with a replaceable standard retro fit LED dimmable bulb.
- / The fitting can be used in conjunction with a number of standard wall mounted dimming control units.
- / Suitable for both private and office environments.

# HAY

**MATERIAL**

SHADE / Anodised spun aluminium shade.

DIFFUSER / Injection moulded translucent polycarbonate diffuser.

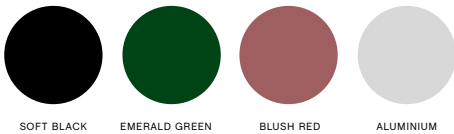
CABLE / Braided fabric cable with a PVC insulation.  
Please note that the cable is black for all colour options.

**COLOUR & FINISH**

Please note that the colour codes are indicative.

Available in 4 different colours.

- / Soft black anodised (RAL 9004)
- / Emerald green anodised (RAL 6002)
- / Blush red anodised (PANTONE 492 U)
- / Aluminium anodised



**COMBINATIONS**

SIZE	COLOUR			
	SOFT BLACK	EMERALD GREEN	BLUSH RED	ALUMINIUM
SMALL	•	•	•	•
MEDIUM	•	•		•
LARGE	•			•

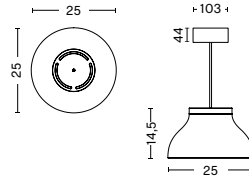
**DIMENSIONS**

**PC PENDANT SMALL**

WIDTH / 25 cm / 9.8"

DEPTH / 25 cm / 9.8"

HEIGHT / 14,5 cm / 5.7"

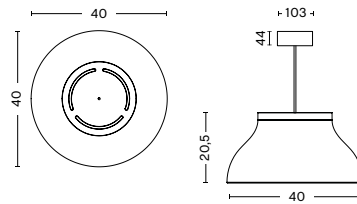


**PC PENDANT MEDIUM**

WIDTH / 40 cm / 15.7"

DEPTH / 40 cm / 15.7"

HEIGHT / 20,5 cm / 8.1"

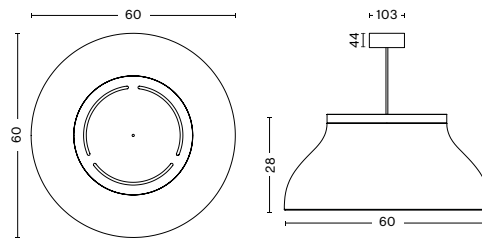


**PC PENDANT LARGE**

WIDTH / 60 cm / 23.6"

DEPTH / 60 cm / 23.6"

HEIGHT / 28 cm / 11"



## TECHNICAL SPECIFICATIONS

### SMALL PC PENDANT

- / RECOMMENDED LIGHT SOURCE / 3 x LED G9
- / POWER (watts) / 3-5W
- / DIMMABLE / Yes\*
- / POWER SUPPLY / 220-240V AC at 50/60Hz
- / CORD LENGTH / 400 cm
- / SWITCH / No

\*If used in conjunction with a wall mounted dimmer and suitable LED bulb. Bulb not included.

### TEST SPECIFICATIONS\*

- / FLUX (lumens) / 300-600lm
- / CCT & CRI / The levels will vary depending on the type of bulb used in the lamp.

\*Photometrics and the specification shown is taken using the recommended LED bulbs fitted in the production luminaire.

## CERTIFICATIONS

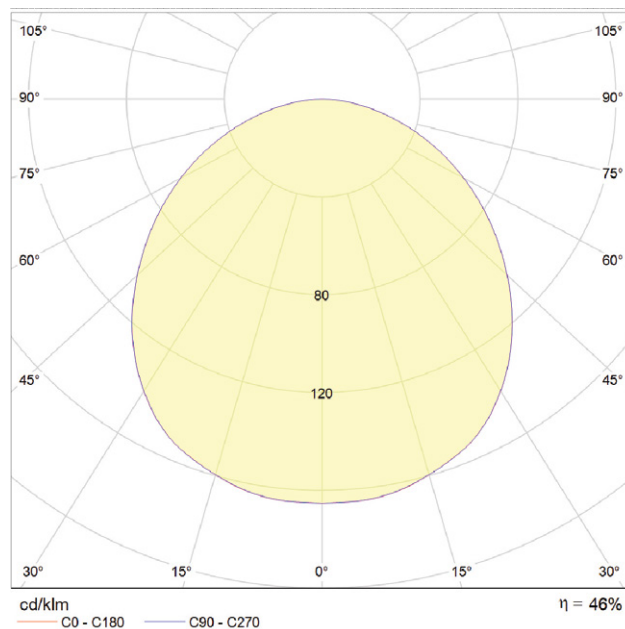
/ CE approved: this product has been assessed and complies with the essential requirements of the relevant European directives.



Tested according to the following European EN / IEC standards which relate specifically to electrical lighting products including:

- / EN 55015:2013 (radio disturbance)
- / EN 61547:2009 (EMC immunity)
- / EN 61000-3-2:2014 (EMC compatibility)
- / EN 61000-3-3:2013 (EMC compatibility)
- / EN 60598-2-4:1997 (portable luminaires)
- / EN 60598-1:2015 (general requirements)
- / EN 62493:2010 (human exposure to EMC)

## PHOTOMETRICS



## DOWNLOADS

Packshots and lifestyle photos, 2D / 3D files, care and maintenance instructions, CE attestation of conformity certificates, product fact sheets, and product presentations are available in our Image Bank at hay.com.

[Link to downloads.](#)

## TECHNICAL SPECIFICATIONS

### MEDIUM PC PENDANT

- / RECOMMENDED LIGHT SOURCE / 1 x LED E27 (A19)
- / POWER (watts) / 10-13W
- / DIMMABLE / Yes\*
- / POWER SUPPLY / 220-240V AC at 50/60Hz
- / CORD LENGTH / 400 cm
- / SWITCH / No

\*If used in conjunction with a wall mounted dimmer and suitable LED bulb. Bulb not included.

### TEST SPECIFICATIONS\*

- / FLUX (lumens) / 1000-1500lm
- / CCT & CRI / The levels will vary depending on the type of bulb used in the lamp.

\*Photometrics and the specification shown is taken using the recommended LED bulb fitted in the production luminaire.

## CERTIFICATIONS

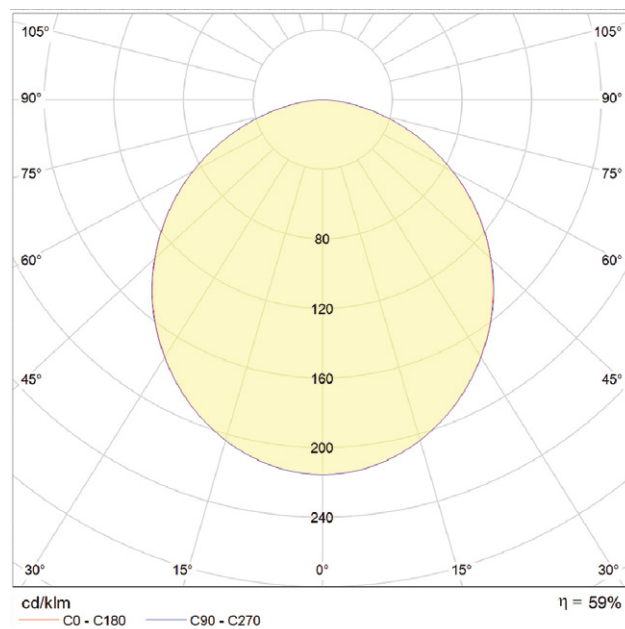
/ CE approved: this product has been assessed and complies with the essential requirements of the relevant European directives.

LED   IP20  

Tested according to the following European EN / IEC standards which relate specifically to electrical lighting products including:

- / EN 55015:2013 (radio disturbance)
- / EN 61547:2009 (EMC immunity)
- / EN 61000-3-2:2014 (EMC compatibility)
- / EN 61000-3-3:2013 (EMC compatibility)
- / EN 60598-2-4:1997 (portable luminaires)
- / EN 60598-1:2015 (general requirements)
- / EN 62493:2010 (human exposure to EMC)

## PHOTOMETRICS



## DOWNLOADS

Packshots and lifestyle photos, 2D / 3D files, care and maintenance instructions, CE attestation of conformity certificates, product fact sheets, and product presentations are available in our Image Bank at hay.com.

[Link to downloads.](#)

## TECHNICAL SPECIFICATIONS

### LARGE PC PENDANT

- / RECOMMENDED LIGHT SOURCE / 3 x LED E27 (A19)
- / POWER (watts) / 10-13W
- / DIMMABLE / Yes\*
- / POWER SUPPLY / 220-240V AC at 50/60Hz
- / CORD LENGTH / 400 cm
- / SWITCH / No

\*If used in conjunction with a wall mounted dimmer and suitable LED bulb. Bulb not included.

### TEST SPECIFICATIONS\*

- / FLUX (lumens) / 1000-1500lm
- / CCT & CRI / The levels will vary depending on the type of bulb used in the lamp

\*Photometrics and the specification shown is taken using the recommended LED bulbs fitted in the production luminaire.

## CERTIFICATIONS

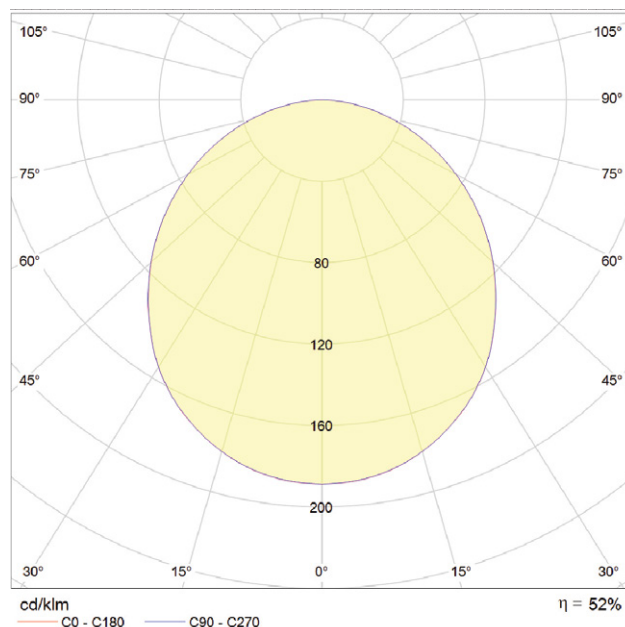
/ CE approved: this product has been assessed and complies with the essential requirements of the relevant European directives.

LED   IP20  

Tested according to the following European EN / IEC standards which relate specifically to electrical lighting products including:

- / EN 55015:2013 (radio disturbance)
- / EN 61547:2009 (EMC immunity)
- / EN 61000-3-2:2014 (EMC compatibility)
- / EN 61000-3-3:2013 (EMC compatibility)
- / EN 60598-2-4:1997 (portable luminaires)
- / EN 60598-1:2015 (general requirements)
- / EN 62493:2010 (human exposure to EMC)

## PHOTOMETRICS



## DOWNLOADS

Packshots and lifestyle photos, 2D / 3D files, care and maintenance instructions, CE attestation of conformity certificates, product fact sheets, and product presentations are available in our Image Bank at hay.com.

[Link to downloads.](#)

# HAY